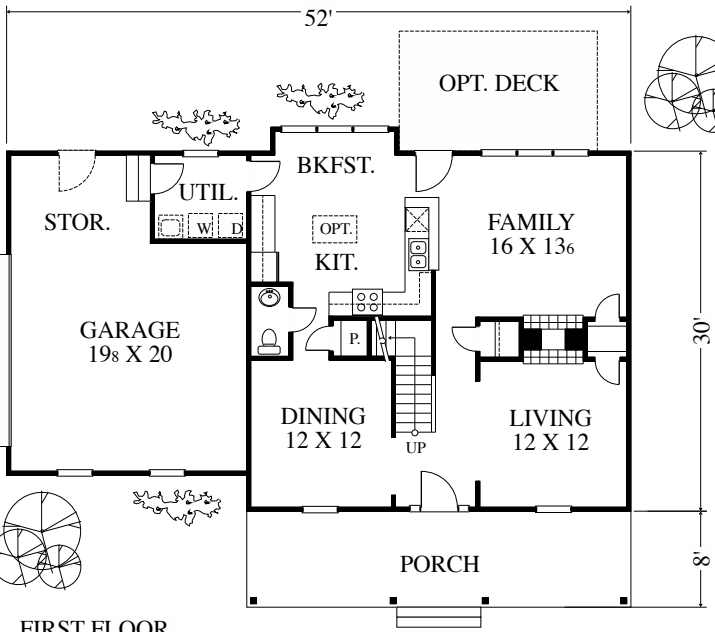
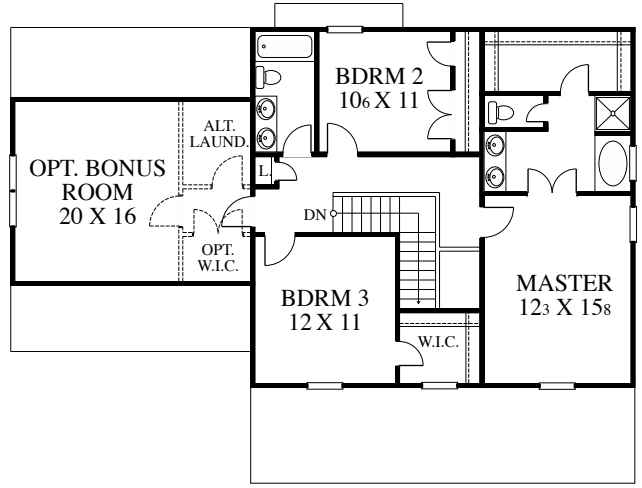


MODEST MOVE-UP



FIRST FLOOR



SECOND FLOOR

Copyright 2001 by James Wentling/Architects

120-01 B2 THE COLONIAL REVIVAL 1938 SQ FT

This three or four bedroom house was designed in the appealing classical style. The plan layout is quite livable with a clear division between formal and informal living spaces. The upstairs also features a zoned bedroom layout for maximum privacy. This plan features a nine foot first floor and a crawl foundation.

PRICE B

JAMES WENTLING / ARCHITECTS

PRICE B